

DIRECTOR: SEAN AITA

Sean Aita is an award-winning writer and director. Having trained originally as an actor at the Bristol Old Vic Theatre School, he performed professionally at the National Theatre, in the West End and extensively in regional rep. Sean was Associate Director at the Royal Theatre Northampton and Artistic Director of Forest Forge Theatre Company, where his work was recognised through the Stage Awards for Regional Theatre. He is the UK Representative of The European Network of Independent Theatres (EON) and has worked for over 20 years with Vienna's English Theatre where, in August, he will direct Florian Zeller's *The Lie*.

DESIGNER: MAIRA VAZEOU

Maira trained at Central. She has designed productions in England and abroad in venues such as the National Theatre of Greece, Lilian Baylis Studio at Sadler's Wells, Wilton's Music Hall, Belgrade Theatre, National Theatre of Cyprus, Riverside Studios and the ancient amphitheatre of Odeon of Herodes Atticus in Athens. Maira has been selected as one of the designers to represent Greece at the International Exhibition Prague Quadrennial in 2019. www.mairavazeou.com

MUSICAL DIRECTION:
JOSEPH ROBERTS

MOVEMENT COACH:
VANESSA EWAN

VOICE COACH:
CLAUDETTE WILLIAMS

DIALECT COACH:
REBECCA GAUSNELL

FIGHT COACH:
JONATHAN LEVERETT

PRODUCTION MANAGER:
DAVID SALTER

COSTUME SUPERVISOR:
HANNAH MCMAHON-MAJOR

BA (HONS) ACTING COURSE
LEADER: NICK MOSELEY
nick.moseley@cssd.ac.uk

THANKS TO:

Matt Berg
Hampstead Theatre
Almeida Theatre
Guildhall School of Music & Drama

SUPPORT US

Thank you to all our donors for their generous support of Central. We give special thanks to The Andy Stewart Charitable Foundation, Andrew Lloyd Webber Foundation, The Beatrice Lillie International College of Comedy and Musical Theatre, Big Lottery Fund, Kitty Corrigan, Creativeworks London, the Estate of Dulcie Denison, Foyle Foundation, Garfield Weston Foundation, The Hall School, The Leverhulme Trust, The Savile Club, Sky, The Estate of Dr Walter Ross, Sylvia Waddilove Foundation UK, Sir Siegmund Warburg's Voluntary Settlement, Winship Foundation, and The Wolfson Foundation. For information about legacies please pick up a brochure from the foyer, or to discuss in confidence contact the Head of Individual Giving on +44 (0)20 7722 8183, meg.ryan@cssd.ac.uk.

ROYAL CENTRAL

SCHOOL OF SPEECH & DRAMA • UNIVERSITY OF LONDON

THE RIMERS OF ELDRITCH

BY LANFORD WILSON

6-9 JUNE 2018

EMBASSY THEATRE



THE RIMERS OF ELDRITCH

Lanford Wilson's powerful drama *The Rimers Of Eldritch* is set in a small mining community in America's 'rust belt'. A sense of decay, of missed opportunities and of insularity permeates the play, which tackles the theme of intolerance in an uncompromising, but also bleakly witty fashion. Although written in the late 1960s the play has a very modern feel to it stylistically; it slips forwards and backwards in time and moves from location to location with a fluidity that counterpoints the character driven and psychologically realistic elements of the play. This is something that we have been keen to reflect in the designs and in the production as a whole.

By arrangement with Josef Weinberger Limited.

CAST – BA (HONS) ACTING STUDENTS

Josh/Trucker	Scott Afton	Josh/Trucker	Griffin Mosson
Nelly	Rosie Baker	Cora	Shaniqua Okwok
Wilma	Ellen Bannerman	Michael	Daniel Rainford
Patsy	Olivia Dodd	Laurence	Daniel Reid-Walters
Skelly	Robbie Fletcher-Hill	Judge	Alexander Roberts
Lena	Siobhan Gallagher	Robert	Wilson Smith
Eva	Eleanor Grace	Peck	Reed Stokes
Martha	Lissie Minnitt	Walter	Lucio Veronesi

CREATIVE TEAM – BA (HONS) THEATRE PRACTICE STUDENTS

Costume Designer	Alexander Gunnarsson	Sound Designer	Jack Vincent
Lighting Designer	Sam Thomas	Video & Systems Designer	Olivia Wilson
Assistant Lighting Designer	Corrie Harris		

PRODUCTION TEAM – BA (HONS) THEATRE PRACTICE STUDENTS

Assistant Director	Chloe Kennedy	Lighting Crew	Daniel Haywood Alex Walton
Assistant Production Manager	Muslihah Mujtaba	Production Sound Engineer	Beth Duke
Stage Manager	Millie Mack	Head of Scenic Art	Annick Gielens
Deputy Stage Manager	Charlotte Owen	Dressers	Chloe Hadley Stephanie Weston
Assistant Stage Managers	Fay Bishop Ellie Coult	Crew	Jade Lam Lisa Mark Joe Monk Rebecca Phillips Daniel Steward
Chief Electrician	David Peters		
Deputy Chief Electrician	Toby Gamble		
Lighting Programmer	Declan Doyle		



Scott Afton
4777-9054-4514



Rosie Baker
1459-3422-2260



Ellen Bannerman
2695-6753-9322



Olivia Dodd
2852-0192-6474



Robbie Fletcher-Hill
4859-0167-8324



Siobhan Gallagher
4934-4531-0521



Eleanor Grace
0098-0191-6088



Lissie Minnitt
1171-3420-9080



Griffin Mosson
9334-3493-0356



Shaniqua Okwok
6213-5643-8597



Daniel Rainford
0052-9052-7199



Daniel Reid-Walters
9896-7833-2499



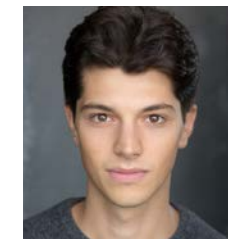
Alexander Roberts
1811-4502-8607



Wilson Smith
2610-1275-1688



Reed Stokes
9254-4503-5662



Lucio Veronesi
3335-7834-4623

Approximate running time: 1 hour 50 minutes (excluding interval).

Please ensure that all mobile phones and pagers are switched off. Video and audio recording and photography are not permitted. Food and drink are not allowed in the performance space.