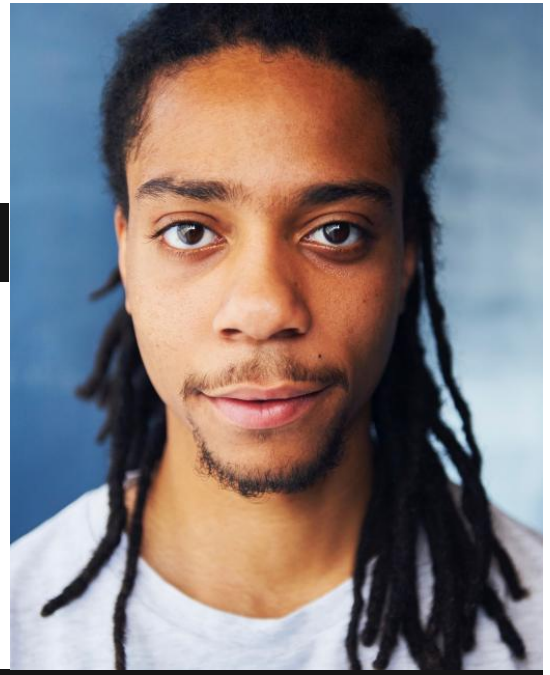


ROYAL CENTRAL

SCHOOL OF SPEECH & DRAMA

UNIVERSITY OF LONDON



DESHAYE GAYLE

Spotlight ID

3417-8940-3546

Email

deshaye.gayle@cssd.ac.uk

Telephone

Catherine Alexander, Tutor: 020
7449 1577

Personal details

Height: 5'11

Eyes: Brown

Hair: Dark Brown

Voice: Baritone

TRAINING

2014 - 2017 Royal Central School of Speech and Drama, BA (Hons) Acting (Collaborative and Devised Theatre)

PRODUCTIONS AT CENTRAL

2017 Santiago - *Maktub* (Marcello Magni)
2016 Penitent/Club Gentleman/Steward - *From Morning to Midnight* (John Walton)
2016 Witch - *Macbeth* (Ng Choon Ping)
2016 Faulkland - *The Rivals* (Dominic Rouse)
2015 Joe Starks/Janie/Deviser - *Their Eyes Were Watching God* (Jemima James)
2015 Puck - *A Midsummer Night's Dream* (Julie Saunders)
2015 Yasha - *Cherry Orchard* (Dominic Rouse)
2015 Jim O'Connor - *The Glass Menagerie* (Ng Choon Ping)

EXPERIENCE

Theatre Credits

2015 Tye - *I Never Get Dressed Till After Dark on Sundays* - Iv Arts Centre (Jin Chen)

R&D

2015 Deviser/Singer/Writer - *"Sing Out" R&D Workshop* (Rene Cruz)

MEMBERSHIPS

Equity

ACCENTS

London*, Multicultural London English (MLE), RP, Caribbean, Cockney, American-African American, American-Southern States, American-Standard

LANGUAGES

English

SKILLS

Devising, BASSC-Rapier/Dagger/Unarmed (distinction), Mask, Spoken Word, Clarinet, Freestyle Dance, Jazz Singing, Piano, R & B Singing, Rap, Singer-Songwriter, Singing (general), Clown, Biomechanics, Facilitation