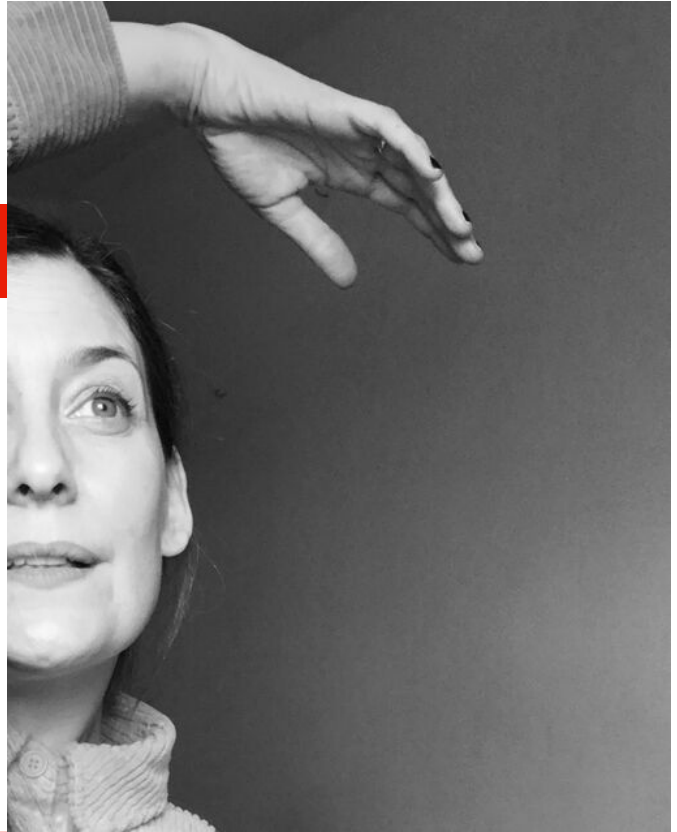


RACHEL PORTER



COURSES

An Introduction to the Sesame Approach in Drama and Movement Therapy

PROFILE

Rachel is a Drama and movement Therapist in London and Belgium with a special focus upon pre-verbal communication. She trained at and now teaches on the [MA Drama and Movement Therapy](#) training at the Royal Central school of Speech and Drama. Through her own company, [Attune](#), she manages Dramatherapists who work with children on the Autistic Spectrum and Profound and Multiple Learning difficulties - <https://attunementprocess.co.uk/>. Rachel has written a research article about her specialist subject Movement with Touch and Sound as well as two book chapters about Multimodality and Intuition within Dramatherapy practice.

Rachel is also a multi-disciplinary artist/theatre practitioner and co-directs [Feral Theatre](#) - <http://feraltheatre.co.uk>.