

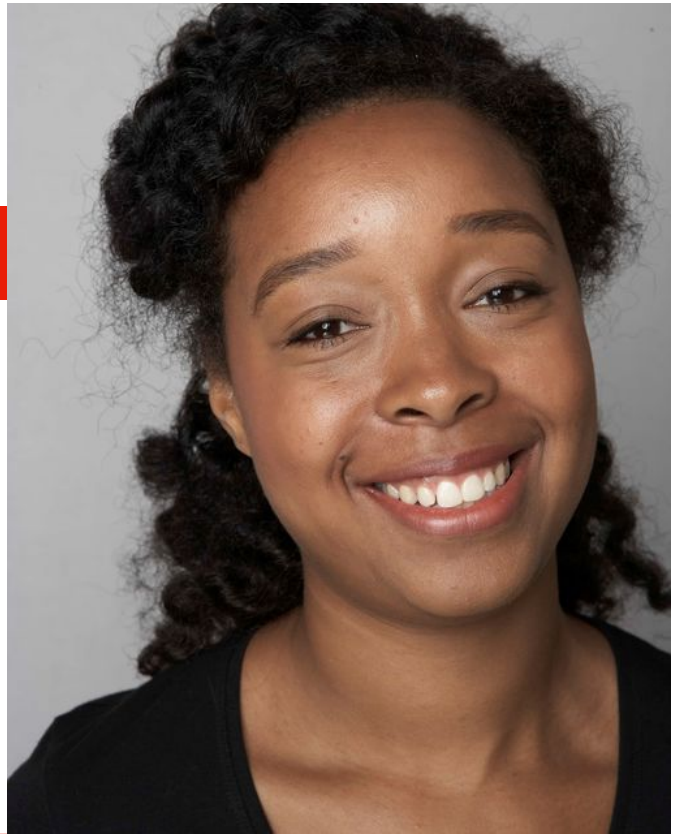
KIM MYERS

Job title

Equality, Diversity and Inclusion (EDI) Manager

Email

Kim.Myers@cssd.ac.uk



PROFILE

Kim Myers joined Central as Equality, Diversity and Inclusion (EDI) Manager in August 2021 and is currently responsible for enabling the development and advancement of Central's equity, diversity and inclusive practices. Kim brings her EDI expertise to policy, people, data and systems in order to embed a renewed culture.

Prior to joining Central, Kim worked within the charity sector as EDI Lead where she was responsible for establishing EDI initiatives across all areas of inclusion combined with her role as HR Business Partner. Kim has previously held HR positions across not for profit and local authority sectors for over ten years. Both areas of expertise are combined within her EDI role at Central.