

**DIRECTOR & DRAMATURG:**  
**NAZLI TABATABAI-**  
**KHATAMBAKHSH**

*The Tempest* is Nazli Tabatabai-Khatambakhsh's first production for The Royal Central School of Speech and Drama, where she is the Deputy Chair of the inaugural Independent Equity Committee. She is an Opera Libretto Doctoral Researcher at the Guildhall School of Music & Drama where she teaches on the Master's in Opera Making and Writing of which she is an alumna. In 2019 she completed her Master of Letters in Theatre and Performance Practices (University of Glasgow) and undertook research into artist critical discourse. @Nazli\_Tabatabai

**MOVEMENT DIRECTOR:**  
**ANNA HEALEY**

Anna is a director and movement specialist. Credits include *The Bacchae*, *As You Like It*, *The Suicide*, *The Devils*, *The Rover* and *Cymbeline* (Central), *The Visit* (Cockpit Theatre), *Tartuffe* (The Albany), *The Winter's Tale*, *Julius Caesar* (Rutgers/Shakespeare's Globe) and *Cluedo* (National Tour). Her Intimacy Coordination includes *The Winter King*, *Brassic* and *Champion*. Anna is a founding member of NIE Theatre Company and has performed in 20 different countries around the world, they celebrated their 20-year anniversary in 2021.

**SET & COSTUME DESIGNER:**  
**ZAHRA MANSOURI**

Zahra graduated in Theatre Design for Performance at Central Saint Martins whilst also training as a dancer; this would shape her practice with work rooted in understanding movement and how performers interact with their environment. With work spanning genres she has enjoyed small- and large-scale

projects, as well as working abroad. In her early career she was Associate Designer with Fourth Monkey, designing 75 unique productions. This huge undertaking, managing departments and large companies of training performers whilst creating shows with fast turnovers, was a unique experience that grounded and refined her process.

**LIGHTING DESIGNER:**  
**HOLLY ELLIS**

Holly's credits include *CASTEing* (Roundabout), *Autopilot* (Pleasance, Edinburgh), *Animal Kingdom* (Hampstead, Downstairs), *Instructions For A Teenage Armageddon* (Southwark Playhouse) \*Offie Nominated for Best Lighting Design\*, *All The Conversations* and *Another F\*\*\*ing Play About Race* (both Arts Ed), *Bobby And Amy* (North Wall/UK tour/ Pleasance Edinburgh); *Tokyo Rose* (Southwark Playhouse/UK tour), *Louisa And Jo And Me* (Golden Goose Theatre), *The Boy With The Bee Jar* (Hope Theatre), and *Errol's Garden* (UK tour). [www.hollyellislighting.com](http://www.hollyellislighting.com)

**COMPOSER & SOUND**  
**DESIGNER: PIA ROSE**  
**SCATTERGOOD**

Pia Rose Scattergood is a composer, multi-instrumentalist and musical director. She has written music for prestigious ensembles including Britten Sinfonia and the London Symphony Orchestra, and has embarked on cross-media collaborations with creatives at the London Contemporary Dance School and Royal College of Art. Performance highlights include live broadcasts on BBC Radio 3 and at the London Jazz Festival. She was recently awarded a Master's in Composition with Distinction from the Guildhall School of Music and Drama, having previously read music at the University of Cambridge.

**VOICE COACH:**  
**ANNA-HELENA MCLEAN**

Anna-Helena McLean is currently a Performance Practice PhD Candidate at Guildhall School of Music & Drama, pursuing research into alternative hierarchies of practices within the post-Grotowskian laboratory. She was a principal of the Gardzienice Theatre Company in Poland (2000-2007) and toured as the title role in *Electra* (Barbican BITE 06). She was also Musical Leader in *Metamorfozy* and *Orkiestra Antyczna* and Personal Assistant to the Director Włodzimierz Staniewski, running workshops worldwide and Director of the ACT INTERNATIONAL Voice and Performance Residencies which take place annually in Italy.

**STAGE MANAGER:**  
**LIZZIE CHAPMAN**

Lizzie is a freelance company stage manager. Credits include *Yes Prime Minister* (Trafalgar Studios), *Vagina Monologues* (Wyndham's Theatre), *Burn The Floor* (Shaftesbury Theatre), numerous productions for the National Theatre, Lyric Theatre Hammersmith, Tricycle Theatre, Royal Court Theatre – most recently *That Is Not Who I Am*, and will be at the Young Vic in the New Year. She is also a prop buyer working with Irish Company Landmark Productions and Irish National Opera.

**DEPUTY STAGE MANAGER:**  
**KATIE MARIE GALBRAITH**

Katie Marie Galbraith is a freelance stage manager. She studied BA (Hons) Stage and Production Management at East 15 Acting School. Recent credits include *Wizard Of Oz* (Kenneth More Theatre, DSM), *Snatched* (UK Tour, SM on book and LX Op), *Godspell* (Kenneth More theatre, Followspot), *Zorro: The Musical* (Charing Cross Theatre, ASM Cover), *Bugsy Malone* (Kenneth More Theatre, DSM), *Starlight Academy Dance Show* (Kenneth More Theatre, Stage Crew), *The Keyworkers Cycle* (Almeida Theatre, ASM), and *Cinderella* (Kenneth More Theatre, ASM).

**COSTUME SUPERVISOR:**  
**NICOLE BOWDEN**

Nicole's credits include costume work for various schools including London Contemporary Dance School, Italia Conti, and Mountview; Costume Maker for *Heathers* and *Magic Goes Wrong* (West End) and Costume Supervisor for *Ghostbusters: The Gates Of Gozer* (Secret Cinema).

---

**SUPPORTING CENTRAL**

Thank you to all our supporters and in particular to The Andrew Lloyd Webber Foundation, Gareth Neame Foundation, Michael Grandage CBE, Alan and Ros Haigh, Katharina Heigl, The Leverhulme Trust, The Mackintosh Foundation, Clare Rich, Sky, Sonia Friedman Productions, Patricia Storace, The Williams Foundation for the Arts and anonymous donors. For information on supporting Central, please see [www.cssd.ac.uk/support-us](http://www.cssd.ac.uk/support-us).

# ROYAL CENTRAL

SCHOOL OF SPEECH & DRAMA • UNIVERSITY OF LONDON

the  
storm  
inside

# THE TEMPEST

BY WILLIAM SHAKESPEARE

19-22 OCTOBER 2022  
COURTYARD THEATRE

# THE TEMPEST

BY **WILLIAM SHAKESPEARE**

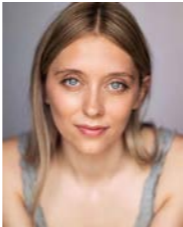
What’s the storm inside of you? When your life fractures and you split, how do you anchor and draw yourself back together? *The Tempest* was first performed in 1611 for King James the first of England and the sixth of Scotland. Today, 2022 *The Tempest* is being performed in the reign of King Charles III, the line of succession foresees two Kings to follow him. In this production you will encounter a near future formed through continued collisions of mixed realities. A splintering and connecting of love through intersectional interpretations of gender and sexuality. What’s the chance of rain?

## CAST - MA ACTING CLASSICAL 2022

Caliban	<b>Audrey Anderson</b>
Caliban	<b>Adi Roy Bhattacharya</b>
Gonzala / Goddess Ceres	<b>Ella Blackburn</b>
Stephano	<b>Sean Carrington</b>
Miranda	<b>Marika De Silva</b>
Antonia / Goddess Juno	<b>Mariella Dyckhoff</b>
Miranda	<b>James Fairhead</b>
Ariel	<b>Max Luck</b>
Alonso	<b>Aadar Malik</b>
Prospero	<b>Caitlin Mallory</b>
Boatswain / Adrienne / Goddess Iris	<b>Clara Morel</b>
Prospero	<b>Gabriel Murphy</b>
Trinculo	<b>James O'Donoghue</b>
Ariel	<b>Premi Tamang</b>
Fernanda	<b>Brooke Thornton</b>
Sebastian	<b>Marcellus Whyte</b>

**This production contains flashing lights.**  
**Approximate running time: 2 hours 40 minutes including an interval**  
Part 1, 1 hour 15 minutes  
Part 2, 1 hour 5 minutes.

Please ensure all mobile phones are switched off. Video and audio recording and photography are not permitted. Food and drink are not allowed in the performance space.



**AUDREY  
ANDERSON**

0096-8940-2999



**ELLA  
BLACKBURN**

1177-9051-7687



**SEÁN  
CARRINGTON**

2258-0163-2375



**MARIKA DE SILVA**

9813-5648-0499



**MARIELLA  
DYCKHOFF**

9170-0198-0978



**JAMES FAIRHEAD**

3339-1274-6053



**MAX LUCK**

4410-1274-0530



**AADAR MALIK**



**CAITLIN  
MALLORY**

5491-3497-5339



**CLARA MOREL**

6572-4508-0017



**GABRIEL  
MURPHY**

7653-5619-5705



**JAMES  
O'DONOGHUE**

8734-6721-9493



**ADI ROY  
BHATTACHARYA**

0456-8943-5192



**PREMI TAMANG**

2053-3425-5033



**BROOKE  
THORNTON**

0457-9054-9870



**MARCELLUS  
WHYTE**

2050-9052-5545

## CREATIVE & PRODUCTION

Director & Dramaturg	<b>Nazli Tabatabai-Khatambakhsh*</b>
Movement Director	<b>Anna Healey^</b>
Set and Costume Designer	<b>Zahra Mansouri*</b>
Lighting Designer	<b>Holly Ellis*</b>
Composer & Sound Designer	<b>Pia Rose Scattergood*</b>
Production Manager	<b>Shaz McGee^</b>
Stage Manager	<b>Lizzie Chapman*</b>
Deputy Stage Manager	<b>Katie Marie Galbraith*</b>
Costume Supervisor	<b>Nicole Bowden*</b>
Costume Assistant	<b>Lynn Clarke Ahrens*</b>
Voice Coach	<b>Anna-Helena McLean*</b>
Scenic Art	<b>Andrea Marsden*, Zowie Wise</b>
Set Crew	<b>Cat McHugh*, Paul Payani*</b>
Lighting Crew	<b>Lars Davidson*, Ciara Moss*, Ebbe Rodtborg-Lauristen*</b>

Sound	<b>Mark Cunningham*, Sasha Howe*</b>
Set built by	<b>SAS Works</b>
Assistant Directors	<b>Samuel Dutton**, Jeni Seo**</b>
Assistant Movement Director	<b>Kim Wright***</b>
Captioner	<b>Becca Elsey^^</b>
Captioning kit supplied by	<b>Roger @DIGITAL-4</b>
FOH Manager	<b>Martin Juul Sorensen^</b>

\*Visiting Professionals    \*\*MA Actor Training & Coaching  
\*\*\*MA Movement: Directing & Teaching    ^^BA (Hons) Theatre Practice    ^Staff

MA Acting Classical Course Leader **Ben Naylor**

## THANKS TO

Frances Morris for costume makes & alterations, Royal Court Theatre, Young Vic Theatre, Rose Bruford College.

